



JWDP-10

**10" VARIABLE SPEED
DRALL PRESS**

JR062 ~230V 50Hz

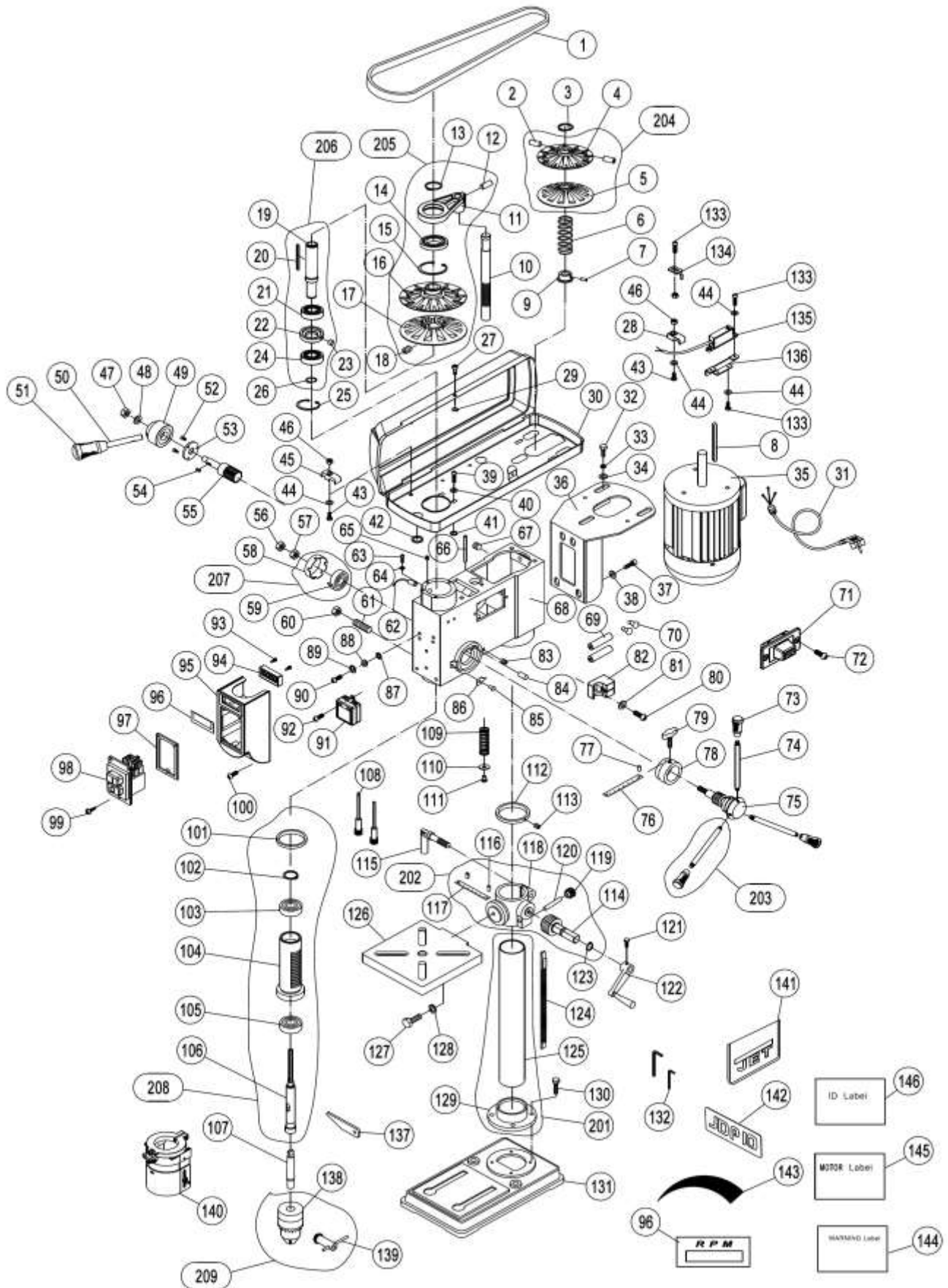
PARTS LIST



Импортер в РФ: ООО «ИТА Технолоджи»
105082, Москва, Переведеновский пер., д. 17
www.jettools.ru
Made in PRC / Сделано в КНР

P-JR062 2026-04

Parts Breakdown for JWDP-10 Drill Press



Parts List for JWDP-10 Drill Press

Index No.	Part No.	Description	Size	Qty
1	JWDP10-001	V Belt	A-800	1
2	GB/T 80	Socket Set Screw	M6x8	2
3	GB/T 894	External Retaining Ring	16mm	1
4	JWDP10-004	Upper Motor Pulley		1
5	JWDP10-005	Lower Motor Pulley		1
6	JWDP10-006	Spring		1
7	GB/T 80	Socket Set Screw	M6x4	1
8	GB/T 1096	Key	A4x98	1
9	JWDP10-009	Spring Seat		1
10	JWDP10-010	Shaft Rack		1
11	JWDP10-011	Link Plate		1
12	GB/T 79	Socket Set Screw	M8x12	2
13	GB/T 894	External Retaining Ring	35 mm	1
14	GB/T 276	Ball Bearing	61907-2RS	1
15	GB/T 893	Internal Retaining Ring	55	1
16	JWDP10-016	Upper Spindle Pulley		1
17	JWDP10-017	Lower Spindle Pulley		1
18	GB/T 80	Socket Set Screw	M5x8	1
19	JWDP10-019	Sleeve		1
20	GB/T 1096	Key	A4x72	1
21	GB/T 276	Ball Bearing	6203-2RS	1
22	JWDP10-022	Sensor Disc		1
23	JWDP10-023	Magnet		1
24	GB/T 276	Ball Bearing	6203-2RS	1
25	GB/T 893	Internal Retaining Ring	40 mm	1
26	GB/T 894	External Retaining Ring	17 mm	1
27	JWDP10-027	Socket Head Screw		2
28	JWDP10-028	Cord Clamp		1
29	GB/T 896	Retaining Ring	6	1
30	JWDP10-030	Belt House		1
31	JWDP10-031	Power Cord		1
32	GB/T 5781	Hex Cap Screw	M8X16	3
33	GB/T 93	Lock Washer	8	3
34	GB/T 95	Flat Washer	Φ17XΦ8.5X3	3
35	JWDP12-036	Motor	230V 50Hz 750W	1
36	JWDP10-036	Motor Support		1
37	GB/T 70.1	Socket Head Cap Screw	M8X16	4
38	GB/T 95	Flat Washer	8 mm	4
39	GB/T 818	Pan Head Machine Screw	M6×10	6
40	GB/T 95	Flat Washer	6 mm	6
41	JWDP10-041	Rubber Washer	Φ6XΦ15X2	6
42	JWDP10-042	Rubber Bushing	Φ18	2
43	GB/T 818-2016	Pan Head Machine Screw	M5X16	5
44	GB/T 95	Flat Washer	5 mm	9
45	JWDP10-045	Cord Clamp		3
46	GB/T 41	Hex Nut	M5	6
47	GB/T 889.1	Lock Nut	M10	1
48	JWDP10-048	Spring Washer	Ø10.5xØ12x1.2	1
49	JWDP10-049	Hub		1
50	JWDP10-050	Speed Adjusting Handle		1
51	JWDP10-051	Handle Cap		1

Parts List for JWDP-10 Drill Press

Index No.	Part No.	Description	Size	Q'ty
52	GB/T 819.1	Flat Head Screw	M5X12	3
53	JWDP10-053	Fixing Plate		1
54	GB/T 1096	Key	A4x10	1
55	JWDP10-055	Pinion Shaft		1
56	GB/T 889.1	Lock Nut	M10	1
57	GB/T 6172.1	Hex Nut	M10	1
58	JWDP10-058	Spring Cover		1
59	JWDP10-059	Spring		1
60	GB/T 41-2016	Hex Nut	M8	1
61	GB/T75	Socket Set Screw	M8x20	1
62	JWDP10-062	Sensor		1
63	GB/T 818	Pan Head Screw	M4X8	3
64	GB/T 95	Flat Washer	4	3
65	GB/T 80	Socket Set Screw	M4X8	1
66	GB/T 879.2	Spring Pin	5X60	1
67	GB/T 80-2007	Socket Set Screw	M8X8	2
68	JWDP10-068	Head		1
69	JWDP10-069	AAA Battery	AAA (#7)	2
70	JWDP10-070	Connecting Terminal		2
71	JWDP10-071	Laser Battery House		1
72	GB/T 818	Pan Head Machine Screw	M5x8	2
73	JWDP10-073	Handle Cap		3
74	JWDP10-074	Feed Handle		3
75	JWDP10-075	Hub And Gear Shaft		1
76	JWDP10-076	Depth Scale		1
77	GB/T 827	Rivet	Φ2.5x6	2
78	JWDP10-078	Scale Ring		1
79	JWDP10-079	Wing Screw	M8X16	1
80	GB/T 818	Pan Head Machine Screw	M6x10	1
81	GB/T 95	Flat Washer	Φ6	1
82	JWDP10-082	Chuck Key Seat		1
83	GB/T	Socket Set Screw	M6X6	2
84	JWDP10-084	External Thread Pin	M6x18	1
85	GB/T 827	Rivet	Φ2.5x6	1
86	JWDP10-086	Pointer		1
87	GB/T 862.1	Serrated Washer	Φ5	2
88	GB/T 95	Flat Washer	Φ5	2
89	GB/T 93	Lock Washer	Φ5	2
90	GB/T 818	Pan Head Machine Screw	M5x8	2
91	JWDP10-091	Transformer		1
92	GB/T 818	Pan Head Machine Screw	M4X8	2
93	GB/T 845	Thread Forming Screw	ST1.9x6.5	4
94	JWDP10-094	Digital Speed Display		1
95	JWDP10-095	Switch Box		1
96	JWDP10-096	Label		1
97	JWDP10-097	Spacer Plate		1
98	JWDP10-098	Switch		1
99	GB/T 845	Thread Forming Screw	ST2.9x9.5	3
100	GB/T 818	Pan Head Machine Screw	M5x12	4

Parts List for JWDP-10 Drill Press

Index No.	Part No.	Description	Size	Q'ty
101	JWDP10-101	Rubber Washer	Φ39XΦ50X2	1
102	GB/T 894	External Retaining Ring	Φ12	1
103	GB/T 276	Ball Bearing	6201-2RS	1
104	JWDP10-104	Quill		1
105	GB/T 276	Ball Bearing	6204-2RS	1
106	JWDP10-106	Spindle		1
107	JWDP10-107	Arbor		1
108	JWDP10-108	Laser		2
109	JWDP10-109	Spring		1
110	GB/T 96.2	Flat Washer	8(Φ8.4XΦ24X2)	1
111	GB/T 70.2	Socket Pan Head Screw	M8×16	1
112	JWDP10-112	Column Collar		1
113	GB/T 80	Set Screw	M6×8	1
114	JWDP10-114	Worm Shaft		1
115	JWDP10-115	Lock Handle	M10X35	1
116	GB/T 827	Rivet	Φ2.5×6	2
117	JWDP10-117	Angle Scale		1
118	JWDP10-118	Table Support		1
119	JWDP10-119	Worm		1
120	JWDP10-120	Pin		1
121	GB/T 70.1	Socket Head Screw	M5X12	1
122	JWDP10-122	Table Adjusting Handle		1
123	GB/T 894	External Retaining Ring	Φ14	1
124	JWDP10-124	Rack	505XΦ58	1
125	JWDP10-125	Column	Φ58x680	1
126	JWDP10-126	Table		1
127	GB/T 5781	Hex Cap Screw	M12×35	1
128	GB/T 93	Lock Washer	Φ12	1
129	JWDP10-129	Column Support		1
130	GB/T 5781	Hex head bolt	M8×25	4
131	JWDP10-131	Base		1
132	JWDP10-132	Hex wrench	2.5mm	1
	JWDP10-132	Hex wrench	3mm	1
	JWDP10-132	Hex wrench	4mm	1
133	GB/T 818	Pan head screw	M5×12	5
134	JWDP10-134	Trigger		1
135	JWDP10-135	Micro switch assembly		1
136	JWDP10-136	Support plate		1
137	JWDP10-137	Chuck removal tool		1
138	JWDP10-138	Chuck		1
139	JWDP10-139	Chuck key		1
140	JWDP10-140	Chuck guard	Φ55 mm	1
141	JET-LOGO	JET Logo with Adhesive		1
142	JWDP10-142	JDP 10 Model Logo with Adhesive		1
143	JWDP10-SL	Speed Label		1
144	JWDP10-WL	JET Warning Label		1
145	JWDP10-ML	JET Motor Label		1
146	JWDP10-ID	JET ID Label		1
201	JWDP10-201	Column Assembly (#125 , #129)		1

Parts List for JWDP-10 Drill Press

Index No.	Part No.	Description	Size	Q'ty
-----------	----------	-------------	------	------

202	JWDP10-202	Table Support Assembly (#114,#116~120 , 123)	1
203	JWDP10-203	Handle Assembly (#73,#74)	3
204	JWDP10-204	Motor Pulley Assembly (#2,4,5)	1
205	JWDP10-205	Spindle Pulley Assembly(#11~18)	1
206	JWDP10-206	Pulley Connecting Assembly (#19~24,26)	1
207	JWDP10-207	Spring Assembly (#58,#59)	1
208	JWDP10-208	Spindle Assembly(#101~106)	
209	JWDP10-209	Chuck Assembly (#138,#139)	1

Wiring Diagram for JWDP-10 Drill Press

	colour of strands	Litzenfarben	couleur des cordons
BK	black	schwarz	noir
WH	white	weiß	blanc
BU	blue	blau	bleu
YE	yellow	gelb	jaune
RD	red	rot	rouge
BN	brown	braun	brun
GY	grey	grau	gris
GNYE	green-yellow	grün-gelb	vert-jaune
OG	orange	orange	orange
VT	violet	violett	violet

	meaning of symbol	Bedeutung der Zeichen	interprétation
M	motor	Motor	moteur
S	switch	Schalter	interrupteur
C	condenser	Kondensator	condensateur
E	electronic unit	Elektronik Einheit	unité électronique
F	fuse	Sicherung	fusible
RS	reversing switch	Drehrichtungsschalter	commu. droite/gauche
CS	centrifugal switch	Fliehkraftschalter	déclencheur centrifuge
OL	overload cut-off	Überlastschuttschalter	déclencheur surcharge
L	machine lamp	Maschinenleuchte	lampe
LS	limit switch	Positionsendschalter	micro

