



JWDP-12

**12" VARIABLE SPEED
DRALL PRESS**

JR063 ~230V 50Hz

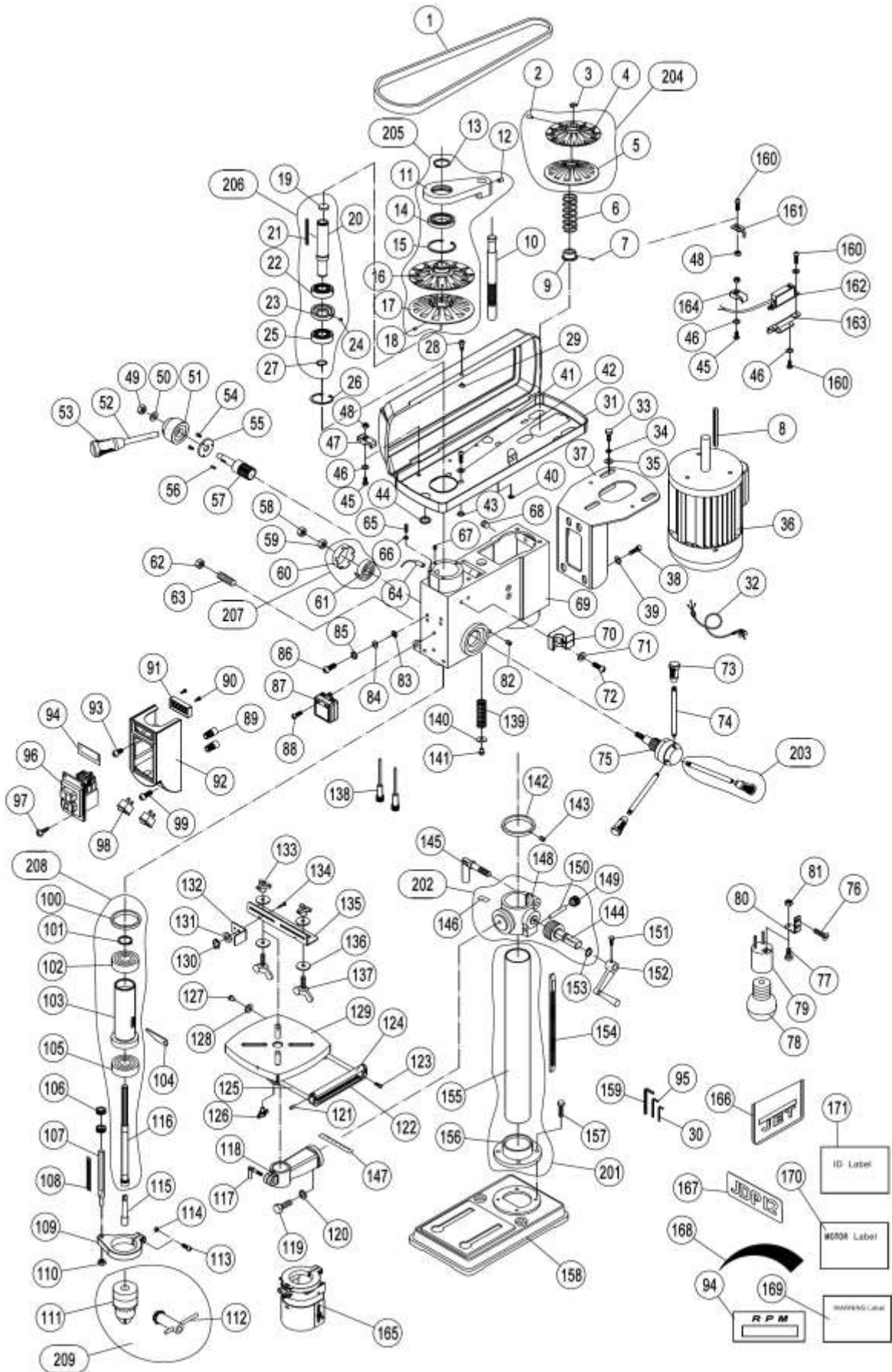
PARTS LIST



Импортер в РФ: ООО «ИТА Технолджи»
105082, Москва, Переведеновский пер., д. 17
www.jettools.ru
Made in PRC / Сделано в КНР

P-JR063 2026-04

Parts Breakdown for JWDP-12 Drill Press



Parts List for JWDP-12 Drill Press

Index No.	Part No.	Description	Size	Qty
1	JWDP12-001	V Belt	A-900	1
2	GB/T 80	Socket Set Screw	M6x8mm	2
3	GB/T 894	Retaining Ring	Ø16	1
4	JWDP12-004	Upper Motor Pulley		1
5	JWDP12-005	Lower Motor Pulley		1
6	JWDP12-006	Spring		1
7	GB/T 80	Socket Set Screw	M6x4	1
8	GB/T 1096	Key	A 4x98	1
9	JWDP12-009	Spring Seat		1
10	JWDP12-010	Shaft Rack		1
11	JWDP12-011	Link Plate		1
12	GB/T 80	Socket Set Screw	M8x12	2
13	GB/T 894	Retaining Ring	35 mm	1
14	GB/T 276	Ball Bearing	61907-2RS	1
15	GB/T 893	Retaining Ring	55 mm	1
16	JWDP12-016	Upper Spindle Pulley		1
17	JWDP12-017	Lower Spindle Pulley		1
18	GB/T 80	Socket Set Screw	M5x8	2
19	JWDP12-019	Sleeve Cap		1
20	JWDP12-020	Sleeve		1
21	GB/T 1096	Key	A 4x72	1
22	GB/T 276	Ball Bearing	6203-2RS	1
23	JWDP12-023	Sensor Disc		1
24	JWDP12-024	Magnet		1
25	GB/T 276	Ball Bearing	6203-2RS	1
26	GB/T 893	Retaining Ring	Φ40	1
27	GB/T 894	Retaining Ring	Φ17	1
28	JWDP12-028	Socket Head Screw		1
29	JWDP12-029	Retaining Ring	6	1
30	JWDP12-030	Wrench	2.5mm	1
31	JWDP12-031	Belt House		1
32	JWDP12-032	Power Cord		1
33	GB/T 70.1	Socket Head Bolt	M8X16	3
34	GB/T 93	Lock Washer	8	3
35	GB/T 95	Flat Washer	8	3
36	JWDP12-036	Motor	~230V 50Hz 750W	1
37	JWDP12-037	Motor Support		1
38	GB/T 70.1	Socket Head Cap Screw	M8X16	4
39	GB/T 95	Flat Washer	8	4
40	JWDP12-040	Bushing	Φ6	2
41	GB/T 818	Pan Head Machine Screw	M6×10	6
42	GB/T 95	Flat Washer	Φ6	6
43	JWDP12-043	Rubber Washer	Φ6XΦ15X2	6
44	JWDP12-044	Bushing	Φ18	2
45	GB/T 818	Pan Head Machine Screw	M5X16	5
46	GB/T 95	Flat Washer	Φ5	9
47	JWDP12-047	Cord Clamp		3
48	GB/T 41	Hex Nut	M5	6
49	GB/T 889.1	Lock Nut	M10	1
50	JWDP12-050	Spring Washer	Φ10.5XΦ20X0.9	1
51	JWDP12-051	Hub		1
52	JWDP12-052	Speed Adjusting Handle		1

Parts List for JWDP-12 Drill Press

Index No.	Part No.	Description	Size	Q'ty
53	JWDP12-053	Handle Cap		1
54	GB/T 819.1	Flat Head Screw	M5X12	3
55	JWDP12-055	Fixing Plate		1
56	GB/T 1096	Key	A 4x10	1
57	JWDP12-057	Pinion Shaft		1
58	GB/T 889.1	Lock Nut	M12	1
59	GB/T 6172.1	Hex Nut	M12	1
60	JWDP12-060	Spring Cover		1
61	JWDP12-061	Spring		1
62	GB/T 41	Hex Nut	M8	1
63	JWDP12-063	Set Screw	M8×25	1
64	JWDP12-064	Sensor		1
65	GB/T 818	Pan Head Screw	M4X8	3
66	GB/T 95	Flat Washer	4	3
67	GB/T 80	Socket Set Screw	M4X10	1
68	GB/T 80	Socket Set Screw	M8×8	2
69	JWDP12-069	Head		1
70	JWDP12-070	Chuck Key Seat		1
71	GB/T 95	Flat Washer	Φ6	1
72	GB/T 818	Pan Head Machine Screw	M6×10	1
73	JWDP12-073	Handle Cap		3
74	JWDP12-074	Feed Handle		3
75	JWDP12-075	Hub & Pinion Shaft		1
76	GB/T 819.1	Flat Head Screw	M5X12	2
77	GB/T 818	Pan Head Machine Screw	4X12	1
78	JWDP12-078	Light Bulb	LED	1
79	JWDP12-079	Light Bulb Holder	E26	1
80	JWDP12-080	Support Plate		1
81	GB/T 41	Hex Nut	M4	1
82	GB/T 80	Socket Set Screw	M6X8	2
83	GB/T 862.1	Serrated Washer	Φ5	2
84	GB/T 95	Flat Washer	Φ5	2
85	GB/T 93	Lock Washer	Φ5	2
86	GB/T 818	Pan Head Machine Screw	M5×8	2
87	JWDP12-087	Transformer		1
88	GB/T 818	Pan Head Machine Screw	M4X8	2
89	JWDP12-089	Terminal		2
90	GB/T 845	Thread Forming Screw	ST1.9×6.5	4
91	JWDP12-091	Digital Speed Display		1
92	JWDP12-092	Switch Box		1
93	GB/T 818	Pan Head Screw	M5×12	2
94	JWDP12-094	Label		1
95	JWDP12-095	Wrench	3mm	
96	JWDP12-096	Switch		1
97	GB/T 845	Thread Forming Screw	ST2.9×9.5	3
98	JWDP12-098	Laser And Light Switch	XCK-017	2
99	GB/T 818	Pan Head Screw	M5×40	1
100	JWDP12-100	Rubber Washer	Φ39XΦ50X2	1
101	GB/T 894	Retaining Ring	Φ12	1
102	GB/T 276	Ball Bearing	6201-2RS	1
103	JWDP12-103	Quill		1
104	JWDP12-104	Chuck Removing Tool		1

Parts List for JWDP-12 Drill Press

Index No.	Part No.	Description	Size	Q'ty
105	GB/T 276-2013	Ball Bearing	6204-2RS	1
106	JWDP12-106	Depth Stop Nut		2
107	JWDP12-107	Depth Stop Screw		1
108	JWDP12-108	Scale		1
109	JWDP12-109	Depth Stop Collar		1
110	GB/T 41	Hex Nut	M8	1
111	JWDP12-111	Chuck	1.5-16mm	1
112	JWDP12-112	Chuck Key		1
113	GB/T 70.1	Socket Head Cap Screw	M6×20	1
114	GB/T 41	Hex Nut	M6	1
115	JWDP12-115	Arbor	MT2/B18	1
116	JWDP12-116	Spindle		1
117	JWDP12-117	Locking Handle	M10X35	1
118	JWDP12-118	Table Support Arm		1
119	GB/T 5781	Hex Cap Screw	M12×30	1
120	GB/T 93	Lock Washer	Φ12	1
121	JWDP12-121	Roller Screw		2
122	JWDP12-122	Roller Support		1
123	GB/T 70.2	Socket Pan Head Screw	M6×12	2
124	JWDP12-124	Roller		1
125	JWDP12-125	Guide Rod		2
126	JWDP12-126	Wing Screw	M8X16	2
127	GB/T 95	Flat Washer	Φ6	2
128	GB/T 818	Pan Head Screw	M6×8	1
129	JWDP12-129	Table		1
130	JWDP12-130	Wing Knob	M6	1
131	GB/T 96.2	Flat Washer	6x18x2	1
132	JWDP12-132	Work Stop		1
133	JWDP12-133	Knob		2
134	JWDP12-134	Carriage Bolt	M6x12	1
135	JWDP12-135	Fence		1
136	GB/T 96.2	Flat Washer	8x24x2	4
137	JWDP12-137	Wing Screw	M8x35	2
138	JWDP12-138	Laser		2
139	JWDP12-139	Spring		1
140	GB/T 96.2	Flat Washer	8x24x2	1
141	GB/T 70.1	Socket Head Cap Screw	M8×16	1
142	JWDP12-142	Column Collar		1
143	GB/T 80	Socket Set Screw	M6×8	1
144	JWDP12-144	Worm Shaft		1
145	JWDP12-145	Locking Handle	M10X35	1
146	JWDP12-146	Pointer Label		1
147	JWDP12-147	Angle Scale		1
148	JWDP12-148	Table Support Bracket		1
149	JWDP12-149	Worm		1
150	JWDP12-150	Pin		1
151	GB/T 70.1	Socket Head Bolt	M5X12	1
152	JWDP12-152	Table Adjusting Handle		1
153	GB/T 894	Retaining Ring	Φ14	1
154	JWDP12-154	Rack	505	1
155	JWDP12-155	Column	Φ65x720	1
156	JWDP12-156	Column Support		1
157	GB/T 5781	Hex Cap Screw	M10×25	4

Parts List for JWDP-12 Drill Press

Index No.	Part No.	Description	Size	Q'ty
158	JWDP12-158	Base		1
159	JWDP12-159	Hex Wrench	4 mm	1
160	GB/T 818	Pan Head Machine Screw	M5×12	5
161	JWDP12-161	Trigger		1
162	JWDP12-162	Micro Switch Assembly		1
163	JWDP12-163	Support Plate		1
164	JWDP12-164	Cord Clamp		2
165	JWDP12-165	Chuck Guard	55mm	1
166	JET-LOGO	JET Logo With Adhesive		1
167	JWDP12-167	JDP 12 Model Logo With Adhesive		1
168	JWDP12-SL	Speed Label		1
169	JWDP12-WL	JET Warning Label		1
170	JWDP12-ML	JET Motor Label		1
171	JWDP12-ID	JET ID Label		1
201	JWDP12-201	Column Assembly (#155 , #156)		1
202	JWDP12-202	Table Support Assembly (#144,146.#148~150 , 153)		1
203	JWDP12-203	Handle Assembly (#73,#74)		3
204	JWDP12-204	Motor Pulley Assembly (#2,4,5)		1
205	JWDP12-205	Spindle Pulley Assembly(#11~18)		1
206	JWDP12-206	Pulley Connecting Assembly (#19~25,27)	1	
207	JWDP12-207	Spring Assembly (#60,#61)		1
208	JWDP12-208	Spindle Assembly(#101~105,#116)		1
209	JWDP12-209	Chuck Assembly (#111,#112)		1

Wiring Diagram for JWDP-12 Drill Press

	colour of strands	Litzenfarben	couleur des cordons
BK	black	schwarz	noir
WH	white	weiß	blanc
BU	blue	blau	bleu
YE	yellow	gelb	jaune
RD	red	rot	rouge
BN	brown	braun	brun
GY	grey	grau	gris
GNYE	green-yellow	grün-gelb	vert-jaune
OG	orange	orange	orange
VT	violet	violett	violet

	meaning of symbol	Bedeutung der Zeichen	interprétation
M	motor	Motor	moteur
S	switch	Schalter	interrupteur
C	condenser	Kondensator	condensateur
E	electronic unit	Elektronik Einheit	unité électronique
F	fuse	Sicherung	fusible
RS	reversing switch	Drehrichtungsschalter	commu. droite/gauche
CS	centrifugal switch	Fliehkraftschalter	déclencheur centrifuge
OL	overload cut-off	Überlastschuttschalter	déclencheur surcharge
L	machine lamp	Maschinenleuchte	lampe
LS	limit switch	Positionsendschalter	micro

JR063..... ~ 230V, 50Hz

